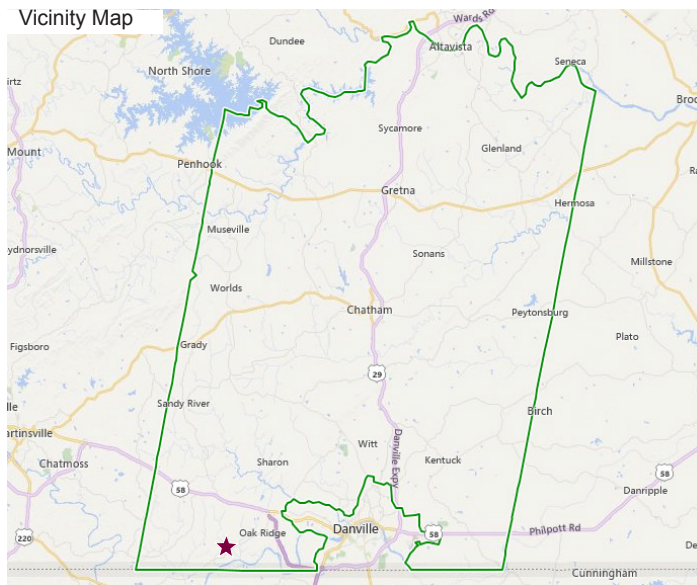


# Berry Hill Industrial Park - Phase 1

Danville, Virginia



## Site Specifications

### Site Location

- Berry Hill Road, Danville, Pittsylvania County, VA 24541

### Highway Access

- Highway U.S. 58: 5 miles
- Highway U.S. 29: 13 miles
- Interstate 40/85: 46 miles

### Air Service

- Danville Regional Airport: 21 miles
- Piedmont Triad International Airport: 50 miles
- Raleigh-Durham International Airport: 85 miles

### Characteristics

- Total Acres: 330 acres
- Topography: 2% slope - graded pads
- Percent Total Site Subject to Flooding: 3.0%

### Fire Protection:

- Provider: Bachelors Hall Volunteer Fire Department, Pittsylvania County
- Distance to Nearest Station: 4.4 miles

### Water Service

- Name of Port: Virginia Port Authority
- Distance to Nearest Deepwater Port: 216 miles

### Rail Service

- Provider: Norfolk Southern Railway Company
- Distance to Rail: 0.3 miles

### Site Status

- Sales Price Per Acre: Negotiable
- Lease Price Per Acre: Negotiable

### Electricity:

- Provider: American Electric Power (AEP)
- Type: 69KV High Voltage Line Existing; 138KV High Voltage Line Planned
- Location: On-site

### Water Supply

- Provider: Pittsylvania County Service Authority
- Location: Adjacent to property
- Size: 16"
- Quantity: 11 MGD +/-

### Sewer

- Supplier: Pittsylvania County Service Authority
- Distance to Service: 2.0 miles
- Size: 16" forcemain

### Gas

- Provider: Danville Utilities
- Distance to Gas Main: 2.5 miles
- Size of Gas Main: 42", 36", 30"

### Phone

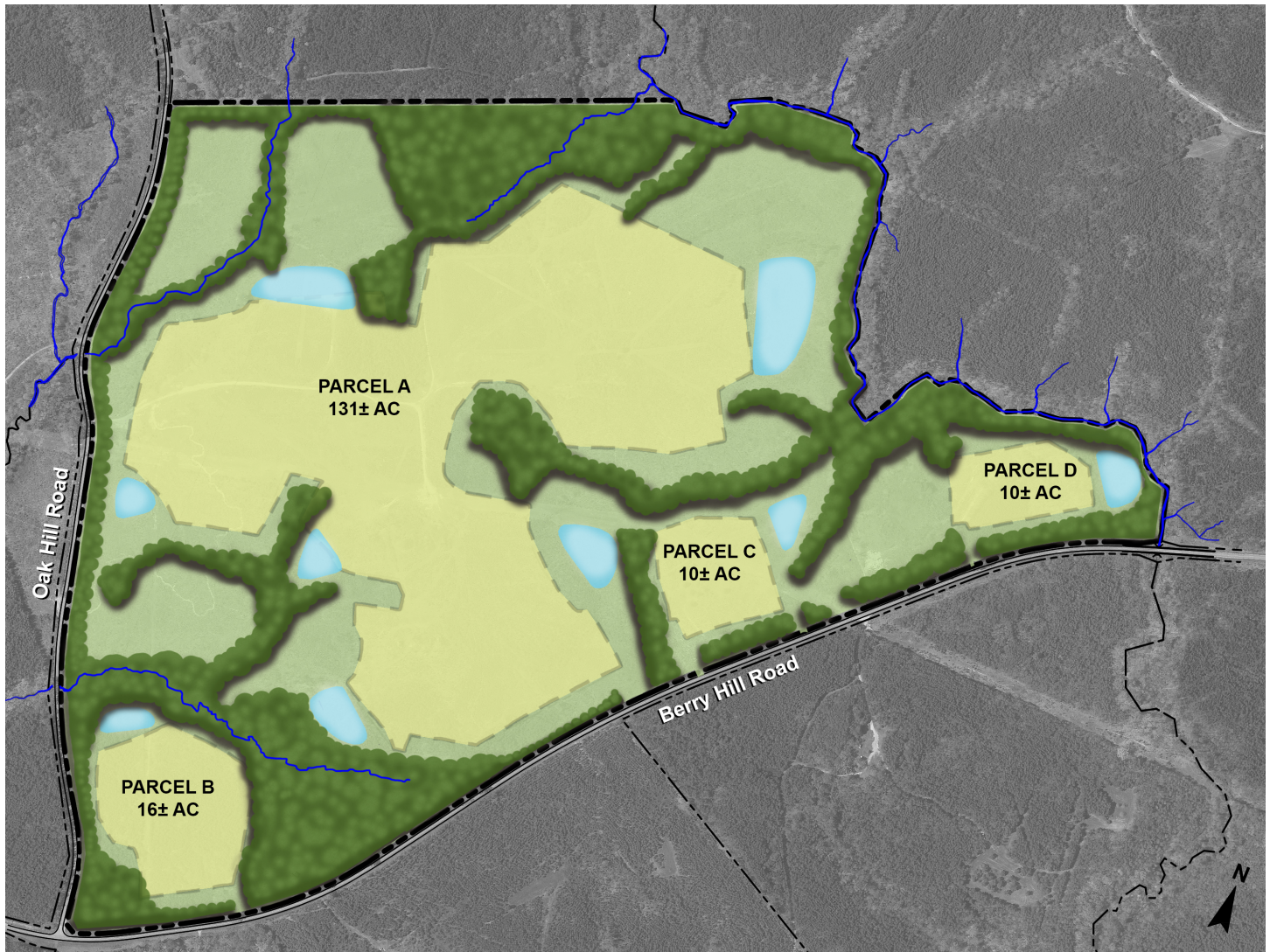
- Provider: Centurylink

### Fiber

- Provider: Mid-Atlantic Broadband Corporation
- Distance to Line: 5.0 miles

# Berry Hill Industrial Park - Phase 1, Page 2

Danville, Virginia



## CONTACT

Matthew Rowe  
Economic Development Director  
Pittsylvania County  
[matthew.rowe@pittgov.org](mailto:matthew.rowe@pittgov.org)  
434.432.1669